

Welcome to the
Future of Working

Let's Share Together



SHARE | In Park
20 | 20



SHARE IN PARK 20|20

SHARE is the latest and most exciting office development at Park 20|20 in Hoofddorp, perfectly located near Schiphol Airport and just a stone's throw from Amsterdam. Inspired by the groundbreaking Cradle to Cradle® philosophy, SHARE seamlessly blends sustainable design with an optimal ecological approach. It's a place where innovation, sustainability, and modern working environments come together!

04 [Overview](#)

05 [Welcome](#)

06 [The Location](#)

11 [The Building](#)

15 [Availability](#)

17 [Contact](#)



Introduction

OVERVIEW

- 01 SHARE comprises approximately 8,100 sq.m.
- 02 Flexible layout.
- 03 Grade A office.
- 05 BREEAM Excellent certified.
- 06 Floors are equipped with a computer floor.
- 07 A light and spacious atrium.
- 08 A shared lobby: eat, meet and drink.
- 09 Beautiful outdoor terrace.
- 10 Excellent accessible area: excellent connections by road and public transport with direct connectivity to Amsterdam Central Station, Schiphol Airport and other cities such as Utrecht, Rotterdam and The Hague.
- 11 Underground parking garage; parking ratio 1:50.



Welcome

YOUR BUSINESS AT SHARE

Looking for a new and inspiring
green work environment

SHARE is the newest addition to Park 20|20 in Hoofddorp, just minutes away from Schiphol Airport and a short hop from Amsterdam. Nestled within the world's first Cradle to Cradle®-inspired business park, SHARE sets a new standard for sustainable, future-proof office spaces by seamlessly blending eco-conscious design with cutting-edge innovation.

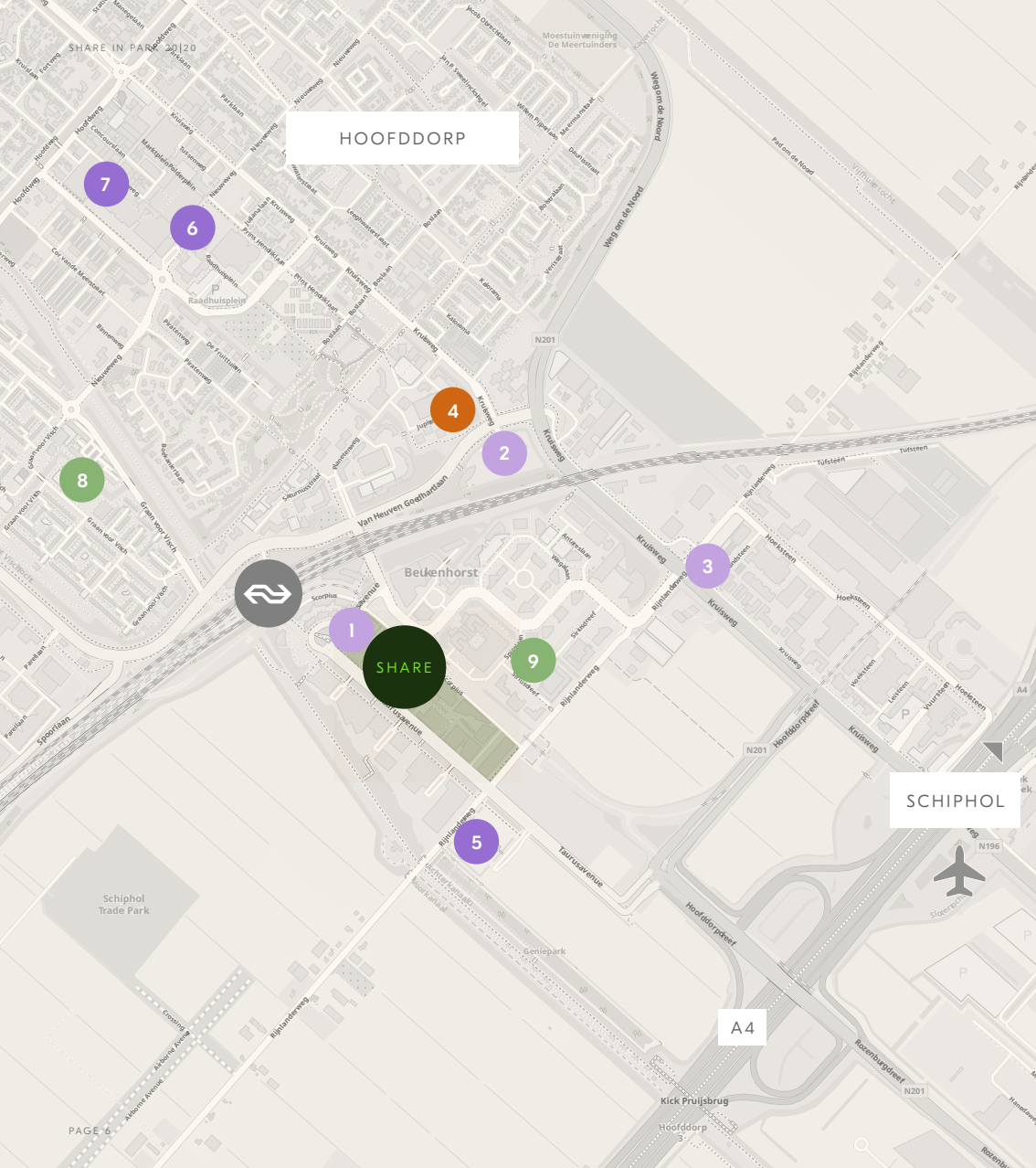
At Park 20|20, every building is designed to inspire and energize. SHARE takes this to the next level, creating an environment that promotes health, well-being, and productivity.

With timeless architecture, an abundance of natural light, fresh air systems, and lush greenery both indoors and out, this is a workspace where people truly thrive.

Whether it's the open, light-filled atrium or the carefully integrated green spaces, SHARE brings nature to your doorstep. It's not just an office building—it's a vibrant, forward-thinking hub where innovation, sustainability, and community come together.

SHARE isn't just a place to work—it's a place to excel, connect, and make a lasting impact. Welcome to the future of work at SHARE.





The Location

HOOFDDORP

Park 20|20 offers so much more than just office space—it's a vibrant community bursting with life and convenience! Imagine having access to a wealth of top-notch amenities, including a stylish hotel, diverse restaurants, and a dedicated childcare facility, all nestled within the lush, green surroundings of the iconic Park 20|20.

Located in the thriving hub of Hoofddorp, this area is on the rise! From rapidly growing residential neighborhoods to innovative office developments and ever-expanding facilities, Hoofddorp is transforming into a dynamic hotspot where work, life, and leisure come together seamlessly.

Whether you're looking for a space to grow your business or a lively, inspiring environment for your team, SHARE puts you at the center of it all. Welcome to a place where possibilities are endless, and success is just around the corner!

HOTELS

- 1 Hotel Novotel Amsterdam Schiphol Airport
- 2 Crowne Plaza Hotel Amsterdam Schiphol
- 3 Hyatt Place Hotel Amsterdam Airport

RESIDENTIAL

- 4 Hyde Park

FOOD AND LEISURE

- 5 Restaurant Den Burgh
- 6 Kinopolis Hoofddorp
- 7 Winkelcentrum Vier Meren

AMENITIES

- 8 Kindercentrum Wereldwijs
- 9 Kindergarden Kinderdagverblijf

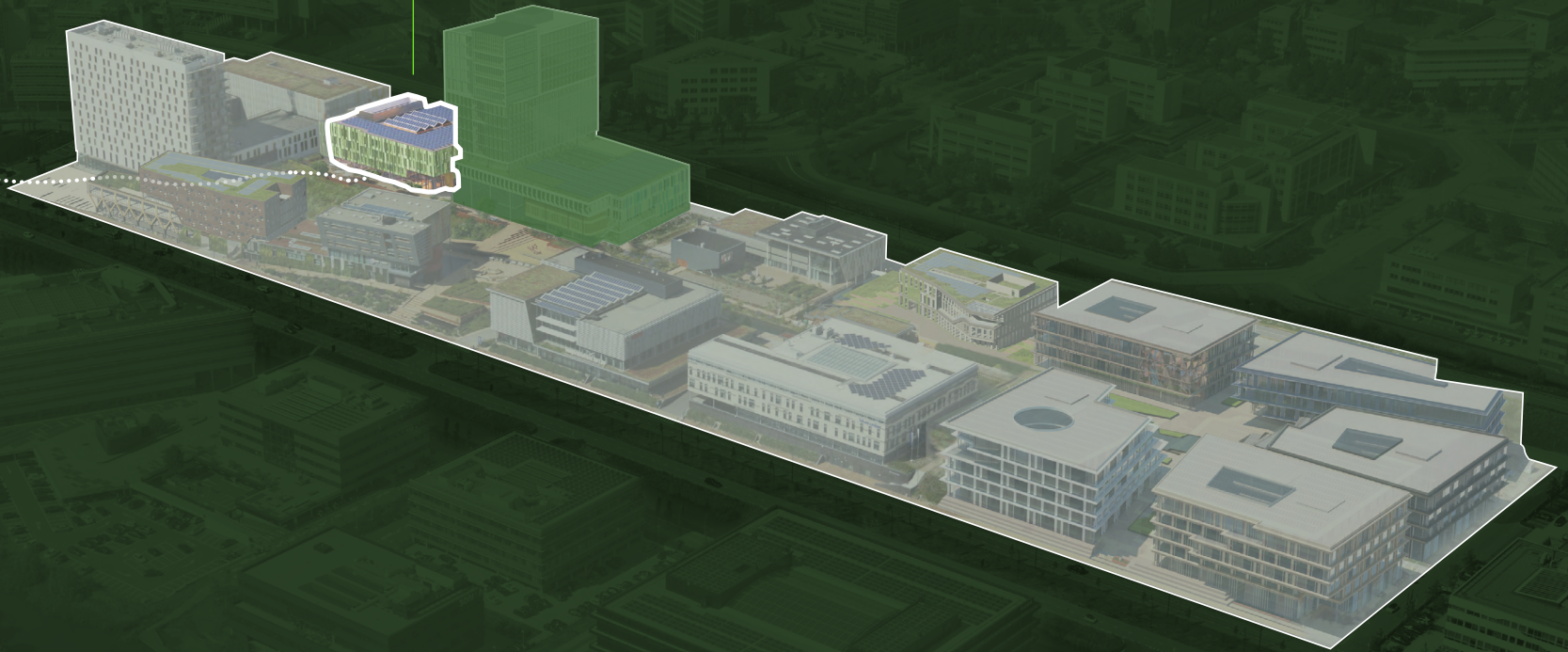
SHARE

IN PARK 20|20

HOOFDDORP
CENTRAL
STATION



5 MIN





The Location

PARK 20|20

A green and sustainable
hub of innovation

Park 20|20 isn't just a place to work—it's a thriving, green oasis where business meets brilliance! Major national and international organizations have already made their home here, including L'Oréal Nederland, Sony Benelux, Bluewater Energy Services, FIFpro, Bosch Siemens, SWISS Re, and Macaw. Why? Because Park 20|20 isn't just sustainable—it's smart, combining cutting-edge technologies with a lush, air-purifying environment that supports well-being and innovation.

And the opportunities don't stop there! Surrounding the park, you'll find an

impressive lineup of globally operating companies like ASICS, Danone, FedEx, Schneider, and Irdeto, creating a vibrant ecosystem where connections flourish.

At the heart of it all lies Park 20|20's communal green landscape—a natural setting designed to inspire collaboration and spark ideas. Whether you're brainstorming with a colleague over coffee at one of the cozy cafés or taking a refreshing walk to recharge your creativity, this is a place where relationships grow, partnerships form, and minds thrive.

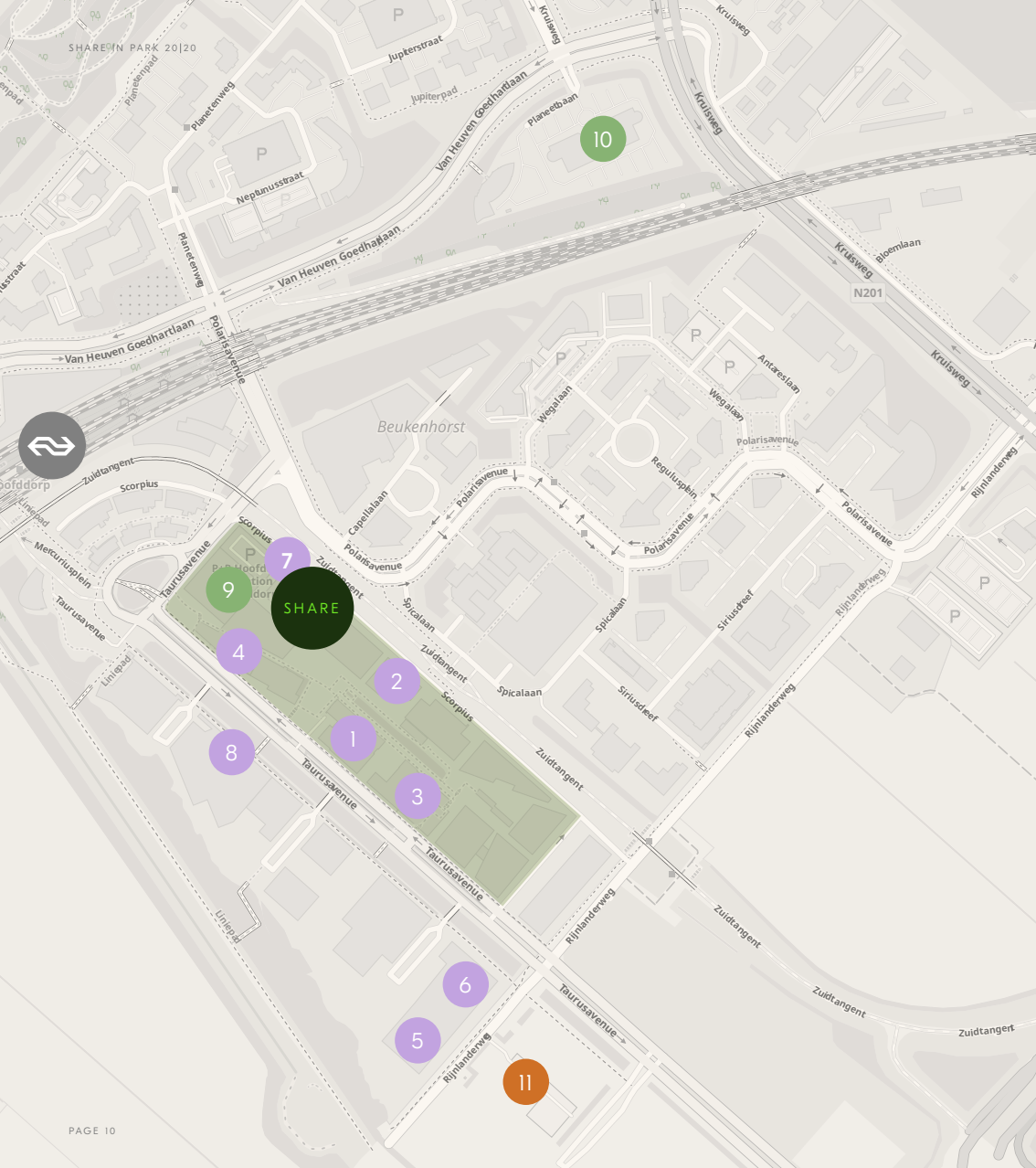
Welcome to Park 20|20—a destination where sustainability, innovation, and community come to life.

The Location

FACILITIES IN PARK 20|20

- 01 Park 20|20 offers communal gardens where you can work, have meetings or go for lunch with colleagues while enjoying the beautiful scenery.
- 02 Feel like exercising? Take a stroll in the beautiful park.
- 03 Childcare facility 'Kindergarden' is just a 5 minute walk from SHARE.
- 04 The 4-star Novotel hotel is directly adjacent to SHARE. Convenient for both business-related overnight stays and renting additional meeting rooms.
- 05 Conference rooms. The beautiful auditorium at FIFPro House has 150 seats and is ideal for press conferences and seminars.





The Location

IN & AROUND PARK 20|20

l'Oréal as your next door neighbour and many other inspiring companies

OFFICES

- 1 Bosch-Siemens Household Appliances
- 2 FIFPRO
- 3 Bluewater
- 4 Sony Benelux
- 5 Asics Europe
- 6 Danone
- 7 L'Oréal Nederland
- 8 Fedex Europe

HOTELS

- 9 Hotel Novotel Amsterdam Schiphol Airport
- 10 Crowne Plaza Hotel Amsterdam - Schiphol

FOOD AND LEISURE

- 11 Restaurant Den Burgh

TRANSPORT

- Station Hoofddorp

The Building

SUSTAINABLE HOTSPOT

Sustainability and human well-being is what defines the DNA of SHARE. The design encompasses a combination of high-tech, sustainable and Cradle to Cradle® materials. The building uses sustainable energy sources, including solar panels integrated in the atrium windows.

SHARE features 100 square meters of green wall that purify the air and -improve acoustics. The result is a modern, warm and inviting building.

The Cradle to Cradle® concept is derived from three basic ideas from the existing laws of nature:

1. Waste = food
2. Sustainable energy
3. Embrace diversity

SHARE offers an abundance of greenery. According to Public Health Reports* immersing employees in nature significantly boosts health and well-being, productivity and performance. It also enhances creativity and innovation — and reduces stress.

* Largo Wright, E. (2011, January 1), Healthy Workplaces: The Effects of Nature Contact at Work on Employee Stress and Health. Retrieved May 13, 2019, from <https://www.ncbi.nlm.nih.gov/pmc/articles/PMC3072911/>





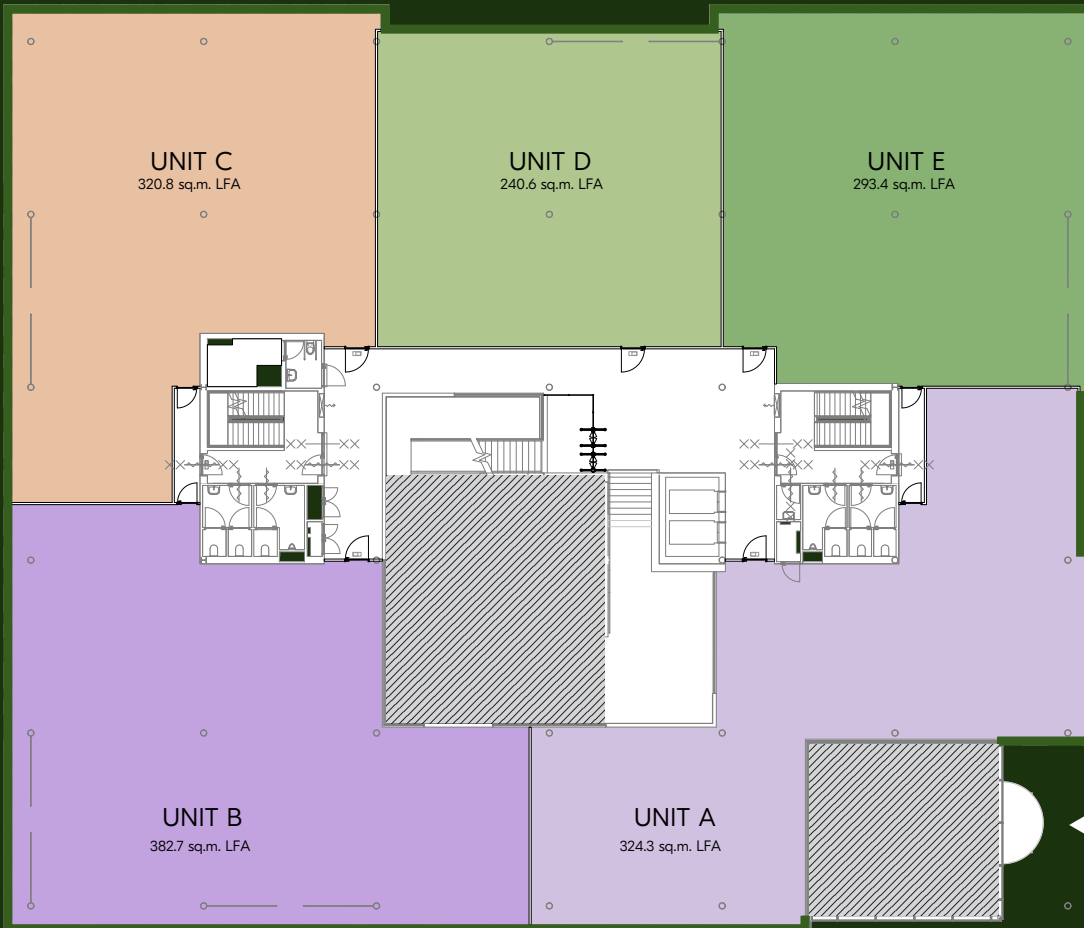
SUSTAINABILITY AND
HUMAN WELL-BEING
IS WHAT DEFINES
THE DNA OF SHARE.

The Building

AIR QUALITY

- 01 SHARE building meets all requirements and recommendations of the European Organisation for Climate Installations.
- 02 The air handling unit works on 100% fresh outside air.
- 03 A very high capacity of 60 m³/h fresh air per person, based on the maximum occupation of the building.
- 04 There are no airconditioning devices in the building that causes recirculating air.
- 05 The climate installation in building SHARE lives up to all the requirements introduced by the RIVM (Dutch institute for public health) with respect to COVID 19.





Availability

AVAILABLE
UNITS ON THE
FIRST FLOOR

Availability

ALL YOU NEED TO KNOW

AVAILABLE

A total 1,947 sq.m. office space located on the 1st floor, available in units starting from approximately 380 sq.m. LFA, parking spaces are available in accordance with the ratio of 1:50 LFA.

RENT PRICE

Office space

Starting from € 195.- per sq.m. per year.

Parking

€ 2,000.- per parking space per year.

SERVICE COSTS

Office space

€ 70.- per sqm LFA per year.

Parking

€ 435.- per parking space per year.

Service costs as an advance payment with annual settlement.

INDEXATION

Annually, starting one year after the lease commencement date, rental adjustments will be made based on the Consumer Price Index (CPI), specifically the "series all households 2015=100" published by the Central Bureau of Statistics (CBS).

LEASE TERM

A minimum lease term of 5 years. A flexible lease term can be discussed.

NOTICE PERIOD

A minimum notice period of 12 months prior to the expiration of the lease term.

RENT PAYMENT

Quarterly advance payment equivalent to at least 3 months' rent and service charges, both subject to VAT.

SECURITY DEPOSIT

The lessee is obligated to provide a bank guarantee equivalent to a minimum of 3 months' rent, to be increased including service charges and VAT.

LEASE AGREEMENT

In accordance with lessor's model, based on the ROZ 2015 lease agreement for office space, 7:230A BW.

VAT

VAT will be applied to the rental price and service charges. The rental prices are calculated under the assumption that the tenant conducts activities within the leased space, of which 90% or more are subject to VAT.

RESERVATION

This information is provided for informational purposes only and should not be considered as binding. It serves as an invitation to submit an offer. Any agreement reached is explicitly subject to written approval from our client or the building owner, as applicable. Until such approval is granted, all proposals made are non-binding.



Contact

YOUR OFFICE IN SHARE?

FIRST
REAL
ESTATE

JEROEN JANSEN

jeroen@fre.nl

+31 (0)6 106 274 75

DIDIER MULKENS

didier@fre.nl

+31 (0)6 100 126 51

SHARE | In Park
20 | 20

DISCLAIMER

Although the information in this document has been compiled with the greatest care, no right can be derived in any way from its contents. The published images provide inspiration of a possible state of delivery. No guarantees are given for the final state of delivery.